

EXPLORE SHANGHAITECH



上海科技大学
ShanghaiTech University

EXPLORE SHANGHAITECH

May 2026



www.shanghaitech.edu.cn/en

393 Middle Huaxia Road
Pudong New Area, Shanghai 201210



WeChat Accounts



Chinese



English



ShanghaiTech Campus

25-Minute Drive

CBD

At a Glance

Founded in 2013, ShanghaiTech University is a **research university** jointly established by the Shanghai Municipal People's Government and the Chinese Academy of Sciences, with a strong emphasis on **academic excellence** and **global engagement**. Located in the heart of Zhangjiang Science City, the university fosters a dynamic ecosystem where education, research, and innovation converge.

With a focus on **photon science, artificial intelligence (AI), biomedicine, and energy**, the university advances science and technology to address global challenges.

2013

Founded

6,968

Students

2,082

Undergraduate

4,886

Graduate

7,000+

Alumni

1,400+

Faculty and Staff

372

Tenure-Track Faculty

11

Academic Units

28

Global Partners

70+

Spinoffs

Beyond Frontiers

The Future of Medicine

Innovation to Impact

Shaping Future Leaders

The People Behind It All

Connecting the Globe

Where It All Happens

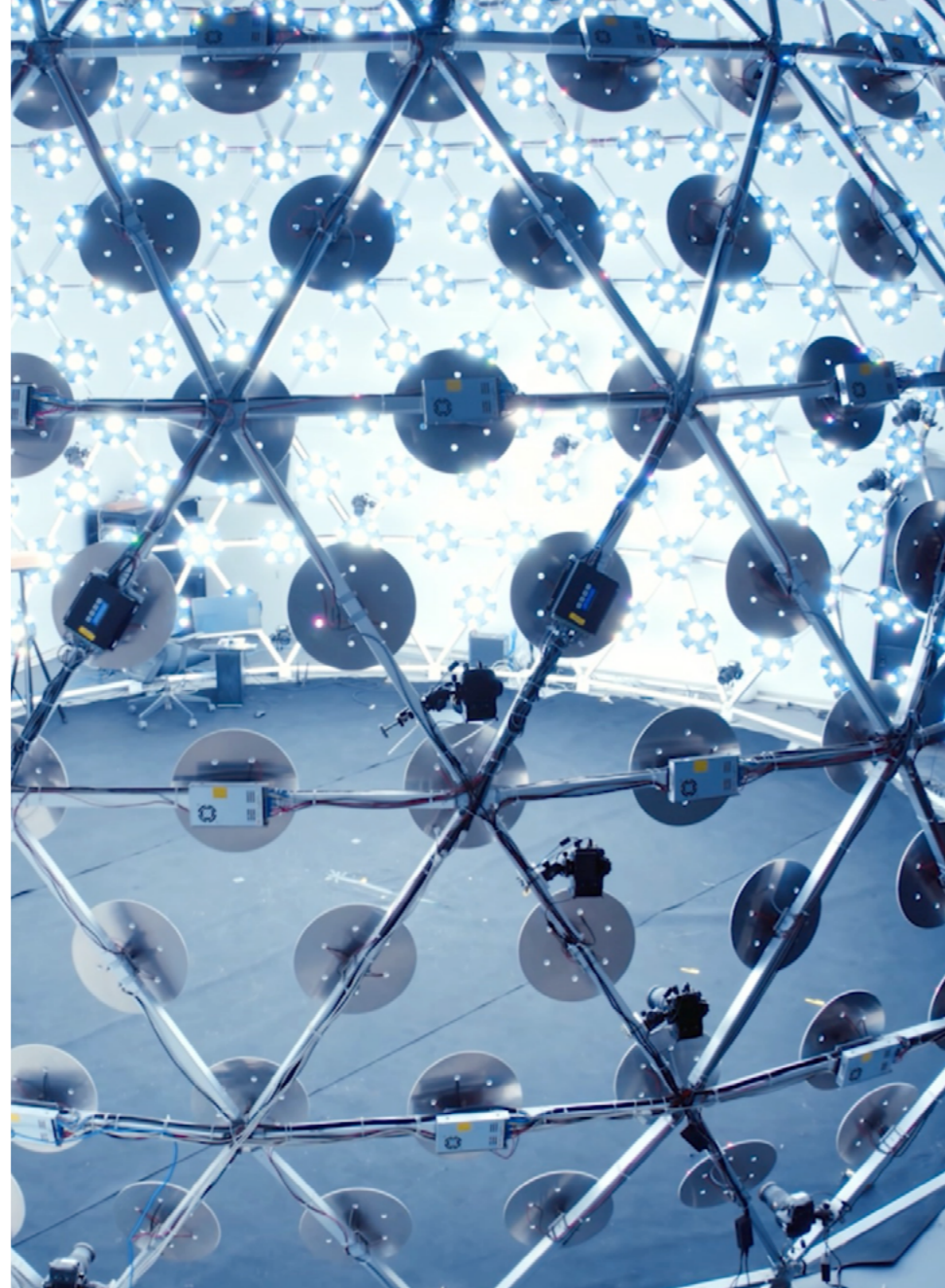
Beyond Frontiers

ShanghaiTech builds its research ecosystem through **major scientific facilities** and **interdisciplinary collaboration**. By integrating large-scale scientific platforms with AI, the university explores frontiers across physical, life, and information sciences—from **atomic-scale dynamics** to **human health** and **sustainable energy**. At ShanghaiTech, open access to world-class facilities enables scientists and students to pursue collaborative and curiosity-driven research.

100+

Publications in *Cell*, *Nature*, and *Science*

ShanghaiTech as
Primary Affiliation



This light field system, developed at ShanghaiTech, captures objects from every angle and delivers ultra-high-resolution 3D reconstruction for high-precision imaging across industries.

ShanghaiTech is surrounded by a world-class cluster of scientific facilities within 2 km of campus

Scientific Facilities

Light Sources

Shanghai Synchrotron Radiation Facility
Soft XFEL Facility
Shanghai High repetition rate XFEL and Extreme light facility (SHINE)

Laser-Based

Superintense Ultrafast Laser Facility

Life Sciences

Live Cell Imaging Facility
National Facility for Protein Science Shanghai

At ShanghaiTech, large-scale scientific facilities such as **SHINE** are fully integrated into the research ecosystem

—**global platforms enabling cross-disciplinary discovery.**



Inside the underground tunnel of the SHINE facility.

How Research Happens at ShanghaiTech

- **Open access** to major scientific facilities across disciplines
- **Close integration** of large-scale platforms with faculty-led research groups
- **Interdisciplinary collaboration** across science, engineering, and the humanities
- **AI-enabled** research and education across disciplines
- **Seamless translation** from fundamental discovery to real-world impact

The Future of Medicine

A Research Hospital and Medical School



What Sets It Apart

- Multidisciplinary, Disease-Centered Care
- Clinically Driven Research
- Advanced General Medicine and Preventive Care
- Innovative Therapies and Translational Science
- Integrated Outpatient Care System
- AI-Enabled Healthcare

Key Focus Areas

- Oncology
- Neurological Disorders
- Respiratory Diseases
- Cardiovascular and Vascular Diseases
- Rheumatic and Musculoskeletal Diseases
- Sensory System Disorders

At the End of

2026

Trial Operation Begins

500

Beds



The research hospital under construction.

Shanghai Clinical Research and Trial Center

Developed and operated by ShanghaiTech University, the Center is a pioneering **research-oriented hospital** integrating clinical care, education, and innovation. It focuses on major diseases while advancing evidence-based medicine and value-driven research.

By bridging clinical application and scientific discovery, the Center accelerates the translation of research into advanced patient care. It also fosters interdisciplinary collaboration through partnerships with leading hospitals, research institutions, and industry, building **an open platform for interdisciplinary innovation in healthcare**.

Looking Ahead

Building on the research hospital, ShanghaiTech aims to further develop a medical school integrating education, research, and clinical practice.



At techIES, high-potential startups not only receive university funding but also attract investment from leading venture capital firms.

A faculty-led project team presents its venture to university community, industry partners, and investors.

Innovation to Impact

At ShanghaiTech, innovation extends far beyond the laboratory. We actively encourage faculty and students to embrace entrepreneurship, transforming pioneering research into real-world products that drive social progress.

Supported by a dedicated **Office of Technology Transfer (OTT)** and **two early-stage incubators**, the university has built a robust pipeline for commercialization. ShanghaiTech consistently ranked **among the top 10** Chinese universities in technology transfer from 2018 to 2023. Our **Innovation and Entrepreneurship Summit (techIES)** further serves as an open platform bridging academia and industry.

From fundamental science to cutting-edge technologies, ShanghaiTech has cultivated a comprehensive ecosystem for research translation across all frontiers.

2,395 Patents Filed

803 Patents Granted

20% Conversion Rate

70+ Spinoffs

\$310M Total Early-Stage Funding

From Lab to Market

Since 2016, ShanghaiTech has fostered a steady stream of startups led by faculty and students. Leveraging world-leading original technologies, these ventures have successfully filled critical market gaps, with breakthroughs spanning 3D generation, gene editing, and advanced circuitry systems.



Correctseq
正序生物

Clinical Impact

A clinical success in base-editing for β -thalassemia, featuring the first international pediatric patient treated in Shanghai. To date, 20 patients with severe transfusion-dependent β -thalassemia have been successfully treated using the first-in-class drug developed by **CorrectSequence Therapeutics**, a ShanghaiTech-incubated venture.



影眸科技

Real-World Applications

High-fidelity 3D scene reconstruction from an RGB image by **Deemos**, a pioneer in the 3D AIGC field. Leveraging proprietary vision algorithms, this ShanghaiTech's spinoff has streamlined the 3D scene reconstruction process for global enterprises.

Shaping Future Leaders

ShanghaiTech redefines education through **interdisciplinary integration** and a forward-looking **AI-focused curriculum**. By bridging theory and practice, all undergraduates are required to study economics, cultivating a global perspective on technology and markets.

Students are empowered to become self-directed leaders who transition to world-renowned universities for advanced studies, or drive innovation within leading research institutes and emerging technology industries.

6,968

Students on Campus



100%

Hands-on research and AI model training for all undergraduates

Graduate Lab Rotations

Exploration across specialized research areas



On their debut at the SensUs Biosensor Competition 2025, ShanghaiTech's MakeSense team won the global championship.

Undergraduate Programs

12

Majors

- Biological Science
- Biomedical Engineering
- Biotechnology
- Chemistry
- Computer Science and Technology
- Electronic and Information Technology
- Foreign Languages and Foreign History
- Industrial Design
- Management Science
- Materials Science and Engineering
- Mathematics and Applied Mathematics
- Physics

7

Minors

- Biomedical Engineering
- Entrepreneurship and Management
- Finance
- Information Technology
- Interaction Design
- Life Science
- Mathematics and Applied Mathematics

AI Honors Class

Tailored for elite freshmen in **computer science** to become future AI leaders, this program offers a customized curriculum with one-on-one mentorship, focusing on cutting-edge fields like LLMs, robotics, and embodied intelligence.

3

Micro-Credentials

- IC Design and Automation
- IC Materials and AI Materials Science

Open to all majors, these credit-bearing programs empower undergraduates with professional competencies and hands-on application in IC domains.

Master's and Doctoral Programs

14

Master's Programs

- Biology
- Biology and Medicine
- Biomedical Engineering
- Chemistry
- Computer Science and Technology
- Digital Economy
- Electronic Information
- Electronic Science and Technology
- Information and Communication Engineering
- Materials and Chemical Engineering
- Materials Science and Engineering
- Mathematics
- Mechanical Engineering
- Physics

9

Doctoral Programs

- Biology
- Biology and Medicine
- Chemistry
- Computer Science and Technology
- Electronic Information
- Electronic Science and Technology
- Materials and Chemical Engineering
- Materials Science and Engineering
- Physics

ShanghaiTech offers a set of small, elite, integrated programs from undergraduate to PhD, with solid STEM core serving national strategic needs in advanced circuits, biomedicine, AI, and frontier technologies, nurturing innovative and application-driven future leaders.



Field Immersion
Industry Immersion
Innovation Immersion



School
+
College

ShanghaiTech College

ShanghaiTech adopts a unique “**School + College**” dual-system education model that seamlessly integrates academic rigor with holistic personal development.

Every undergraduate student belongs to both an academic school and one of the university’s three colleges. While the schools focus on professional knowledge and research training, the colleges are dedicated to character building, leadership development, and social responsibility.

Each student is assigned to a mentor group and paired with faculty members, who provide **continuous and four-year guidance** across academics, social engagement, industrial internships, and innovation projects. Through diverse programs in arts, sports, mental wellness, student organizations, and community service, the colleges cultivate students’ well-rounded personalities and strong sense of social responsibility.

3 Colleges | Shangdao
Kedao
Dadao

4-Year Guidance | **2** Mentors per Group | **6-9** Students per Group

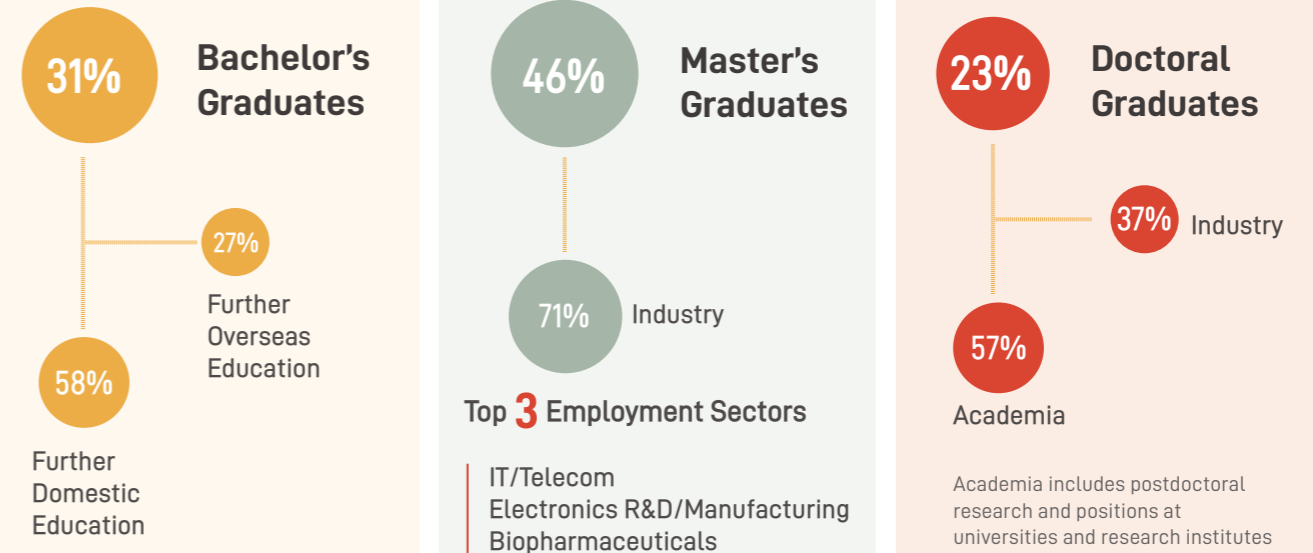
From different schools

1,340

Graduates in 2025

A diverse pathway after graduation

Graduates pursue advanced studies or contribute to innovation across academia and industry.



The People Behind It All

372

Faculty

13% International

53% Under 40

ShanghaiTech fosters a dynamic academic community with a strong commitment to developing its people.

Tenure-track professors make up **26%** of the university's workforce of **1,417**, many with extensive international experience. A dedicated body of engineers, technical staff, and administrative professionals also plays a vital role in supporting research, education, and innovation.

Through faculty development programs and AI-focused workshops, the university supports continuous growth in teaching, mentorship, and professional skills.

A Community of Outstanding International Young Scholars



Each academic year, the three Colleges host dedicated training for undergraduate mentors to strengthen their mentoring skills and educational philosophy, fostering a deeper integration of academic instruction and holistic student growth.



Wolfgang Baumeister Professor

A global leader in cryo-electron tomography (cryo-ET) and director of ShanghaiTech's Cryo-ET Facility

His pioneering work enables in situ studies of biological components within intact cells and has earned him major international honors, including the **Shaw Prize** and the **Canada Gairdner International Award**.

From Discovery to Impact

Liu Wei Associate Professor

A rising leader in energy materials research, focusing on solid-state batteries and lithium extraction.

Her work advances key technologies in energy storage, with publications in leading journals and patents granted in China and the United States. She was named a **Highly Cited Researcher by Clarivate in 2021**.



Connecting the Globe

Since its founding, ShanghaiTech has built a **global network for education, culture, and innovation**, connecting students, faculty, and research communities worldwide.

Through international exchanges and research collaborations, the university fosters cross-cultural learning and interdisciplinary cooperation. Over the past decade, about **30% of undergraduate students** have participated in global programs. Partnerships such as the university's **collaboration with the Philadelphia Orchestra** further enrich campus life through world-class artistic and cultural engagement.



7,000 Alumni
Across **14** Countries

28 Global Partners

During a visit to the University of Oxford, a partner institution, ShanghaiTech leadership met with alumni studying there, reflecting the university's growing global network.

Global Programs

Inbound

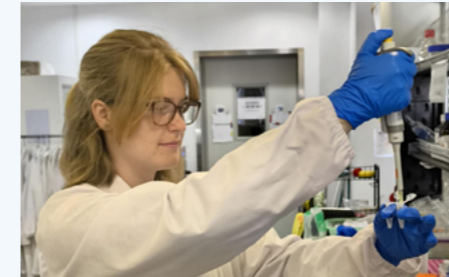
- Summer Lab Program
- Visiting Scholars
- Enrollment for International Doctoral Students

Outbound

- Overseas Study Program
- Summer Program
- Fast-Track Master's Program

My studies at UIUC reinforced the global perspective I gained at ShanghaiTech. Engaging classroom discussions and passionate faculty inspired me to participate more actively and pursue further studies.

Huang Shiqi '25, School of Life Science and Technology
Overseas Study Program 2024



My time in China was short but unforgettable. At ShanghaiTech, I gained hands-on research experience, explored Chinese culture, and collaborated with peers from around the world.

Alexandra van Breemen, Leiden University Medical Center
Summer Lab Program 2024



As part of an ongoing partnership, the Philadelphia Orchestra regularly performs at ShanghaiTech, bringing world-class music and cultural engagement to campus.

Where It All Happens

A Campus Where Research, Education, and Everyday Life Converge



A future museum of science and technology, open to ShanghaiTech and the wider community.



The university library is an open and collaborative space serving as a central hub for study, collaboration, and campus life.

Spaces That Bring People Together

ShanghaiTech's campus is designed as an open environment for learning, research, and everyday life. From collaborative academic spaces to vibrant public areas, the university fosters a **dynamic community where science, culture, and human connection intersect.**

Among ShanghaiTech's evolving public spaces is its future museum, conceived as a space linking scientific exploration, public engagement, and interdisciplinary dialogue. Together with libraries, residential spaces, and natural landscapes, these environment reflect the university's commitment to creating a sustainable, inclusive, and intellectually vibrant community.



Moments of nature shape the rhythm of the campus.